

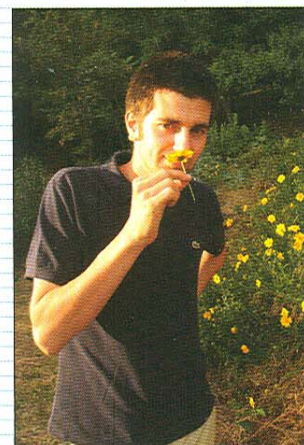


Lucia Nusiner dello studio GPT

Fiori e Erbe in Piazza

Le erbe e i fiori di Valfredda disposti seguendo il raffinato progetto di Lucia Nusiner arredano una delle piazze più belle d'Italia. Lucia e Mauro vi guidano nel riconoscimento delle essenze erbacee utilizzate per questa collezione di fiori e di erbe in Piazza Vecchia.

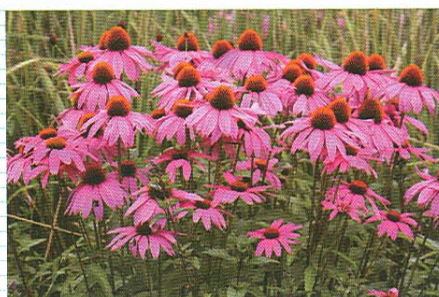
In Piazza Vecchia, one of the most beautiful squares in Italy, Lucia and Mauro guide you through flowers and grasses from Valfredda nursery (project by Lucia Nusiner).



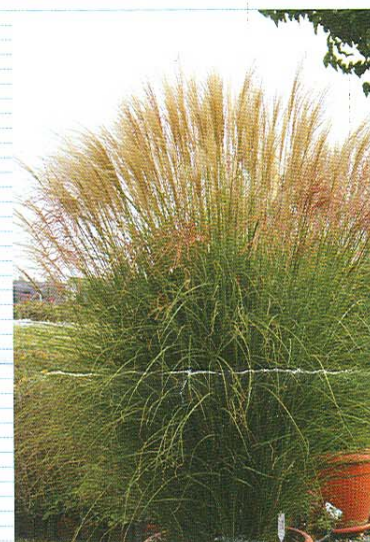
Mauro Crescini delle coltivazioni Valfredda



Pennisetum alopecuroides 'Moudry'



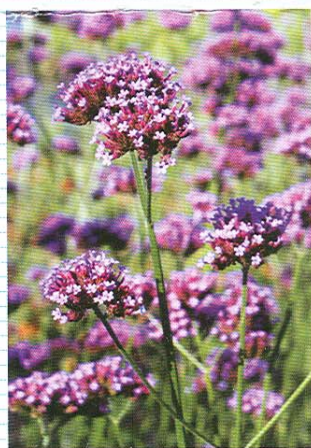
Echinacea purpurea 'Magnus'



Miscanthus sinensis 'Gracillimus'



Pennisetum
'National Arboretum'



Verbena bonariensis



Anemone hybrida 'Honorine Jobert'



Miscanthus sinensis 'Adagio'



Allium ramosum



Agastache foeniculum 'Blue Fortune'



Pennisetum 'Goldstrich'



Gaura lindheimeri



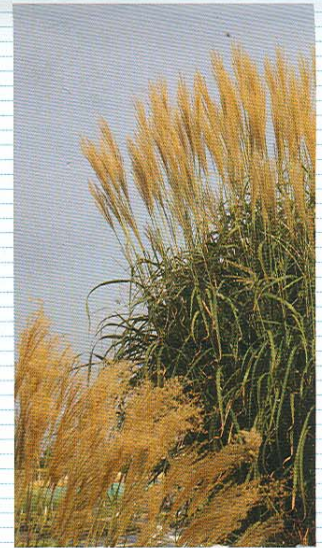
Panicum virgatum
'Strictum Compactum'



Salvia microphylla 'Elba'



Veronica longifolia 'Blauriesin'



Miscanthus sinensis
'Augustfeder'



Pennisetum alopecuroides
(compressum)



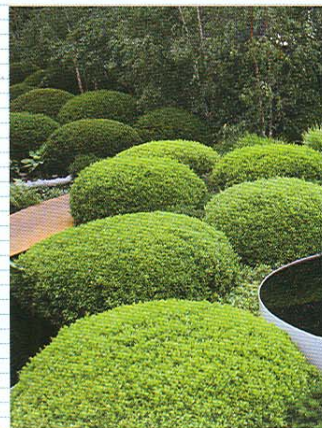
Stipa (Nassella) tenuissima



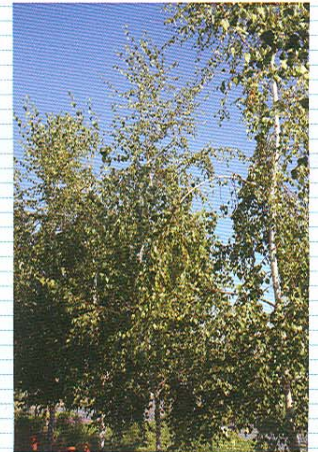
Salvia nemorosa 'Caradonna'



Molinia caerulea 'Karl Foerster'



Buxus sempervirens
(cultivazioni Sandher)



Betula utilis
(cultivazioni Sandher)



Erigeron karvinskianus



Sedum telephium 'Fetthenne'



Onoclea sensibilis



Pennisetum alopecuroides 'Hameln'



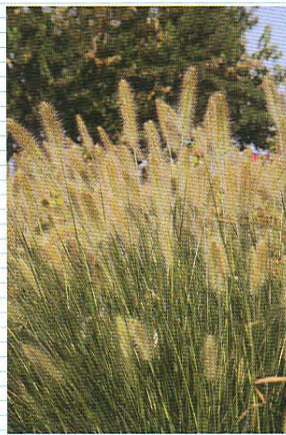
Perovskia atriplicifolia 'Blu Spire'



Calamagrostis x acutiflora
'Karl Foerster'



Anemone hybrida 'Loreley'



Pennisetum alopecuroides
'Japonicum'



Miscanthus sinensis 'Kleine Silberspinne'